



Our Mission:

Transforming the lives of children in foster care through education.

We accomplish this through:

Improving outcomes for children in foster care so they will have a bright promising future.

Driving student achievement to increase high school completion rates.

Closing the educational gap between what the state provides and what children in foster care need.

Success in School Referral Process

1. Discuss **Success in School (SIS)** with the student and the student's caregiver.
2. Complete the **Success in School Referral Form** and email directly to successinschool@wedchild.org. SIS Referral Forms can be downloaded from our website.
3. Upon FWC receiving the student referral, an FWC Education Specialist will correspond with both the caseworker and the caregiver in regards to the evaluation of the student's acceptance into the program.
4. A program enrollment determination will be made within 7 working days of FWC receiving all necessary student referral information.

Friends of Wednesday's Child SIS Contact Information

Kristen Draughn, Education Specialist
972-231-1433 ext. 208
kdraughn@wedchild.org

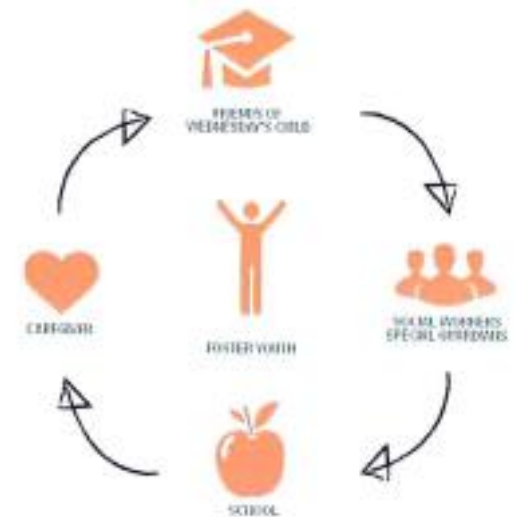
Bailey Huddleston, Education Specialist
972-231-1433 ext. 210
bhuddleston@wedchild.org

For more information and resources, please visit our website at www.wedchild.org



Success in School

Educational Services Program For Children in Foster Care in North Texas.



What is Success in School?

Success in School (SIS) is a program designed to help improve the educational outcomes for youth in foster care in CPS Region 3. A full-time FWC Educational Specialist works directly with students enrolled in the program to ensure academic success. It is a comprehensive educational services program focused on increasing the high school graduation rate of students in foster care. SIS Provides:

- A consistent adult in the role of an Education Specialist
- An array of educational and enrichment services for the student
- Individualized student planning and goal setting

SIS supplements efforts and provides services and resources to CPS, Advocates, Guardians, and Social Workers.

How Will Academic Progress Be Tracked?

The **Success in School** model *evaluates six student factors* that lead to high school graduation. These include:

1. Regular Class Attendance
2. Positive Behavior
3. Passing Course Performance

The last three factors evaluate attitude and engagement:

4. Meaningful participation in an extracurricular activity
5. A sense of belonging and self-determination, as well as a commitment to learning
6. A student-centered plan for the future

Academic & Enrichment Services Available Through SIS.

1. Consistent on-going education support through a full-time Friends of Wednesday's Child Education Specialist
2. School support (special education, school transitions, credit replacements, etc.)
3. Development of a student-centered plan with an Education Specialist
4. One-on-One student goal setting
5. Enrollment in one-on-one tutoring
6. Involvement in a developmentally appropriate extracurricular and/or enrichment activity
7. Summer learning opportunities
8. Student progress reporting

All services provided by FWC are free to students enrolled in the program.



Consistent on-going support through a full-time Education Specialist



School Support (special education, IEP meetings, school transitions, etc.)



Development of a student-centered plan with an Education Specialist



One-on-one goal setting with an education specialist



One-on-one tutoring with a certified tutor



Involvement in a developmentally appropriate extracurricular activity



Summer Learning Opportunities



Student progress reporting provided by FWC

The FWC Education Specialist will prepare SIS student progress reports at the end of each grading period, each semester, and at the end of each academic year. SIS reports can be provided to caseworkers, caregivers, as well as other professionals advocating on behalf of the student.

Who is Eligible for Referral?

Success in School Student Referral Eligibility Criteria:

1. Student who is currently in or is being placed in Permanent Managing Conservatorship (PMC) of the State
2. Student whose current legal status is in Region 3
3. Student who is currently placed in licensed foster care in Dallas, Tarrant, Denton, Kaufman, Rockwall, Collin, or Ellis County
4. Student who is 6-15 years old.*

In addition, students must also meet at least one of the following criteria:

1. Student is behind grade level in any of his/her classes or at risk of grade retention.
2. Student's English proficiency and/or reading level are behind grade level.
3. Student has been referred for an individual initial evaluation to determine the need for special education and related services or if the student is currently receiving special education services under the Individuals with Disabilities Education Act (IDEA).
4. Student has transitioned to a new school within the last 6 months.

**Once a student is accepted into the program, he/she will continue in the program through the duration of their time in foster care.*